



Husqvarna®
READY WHEN YOU ARE

AUTOMOWER® ACCESSORIES AND GENUINE PARTS 2021



WHY CHOOSE HUSQVARNA ACCESSORIES AND GENUINE PARTS?

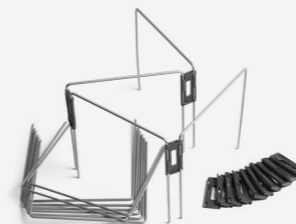
What's the reason for choosing genuine Husqvarna Automower® parts and accessories? Quite simply, it's the only way you can be sure you get a perfect fit for your robotic mower – and maintain the high performance it was built for.

The spare parts are designed and manufactured to never cause any unnecessary wear or damage on other parts of the mower, or put anyone's safety at risk. You will get a safe and trouble-free operation, year after year.

The many different accessories are there to enhance your Automower® experience – and add more functionality that will upgrade your everyday.



ADD MORE TO YOUR AUTOMOWER® EXPERIENCE



TEMPORARY FENCING ARCHES



WALL HANGERS



INSTALLATION KITS



REPLACEABLE TOP COVERS



AUTOMOWER® ENDURANCE BLADES



AUTOMOWER® HOUSES



AUTOMOWER® SKINS



WHEELS



BATTERIES

ACCESSORIES

- Fits good
- Fits but not optimized

HOUSES AND WALL HANGERS



Art. No	105	305 NEW	310	315	315X	405X NEW	415X NEW	320 /420	440	430X	450X	520	550	550 EPOS	435X AWD	535 AWD
AUTOMOWER HOUSE																
1 587 23 61-01		●	●	●	●	●	●									
2 585 01 94-01		○	○	○	○	○	○	●	●	●	●	●	●	●		
3 597 63 53-01															●	●
AUTOMOWER WALL HANGER																
4 587 22 40-01			●	●	●											
5 597 70 36-01		●				●	●									
6 585 01 97-02								●	●	●	●	●	●	●		

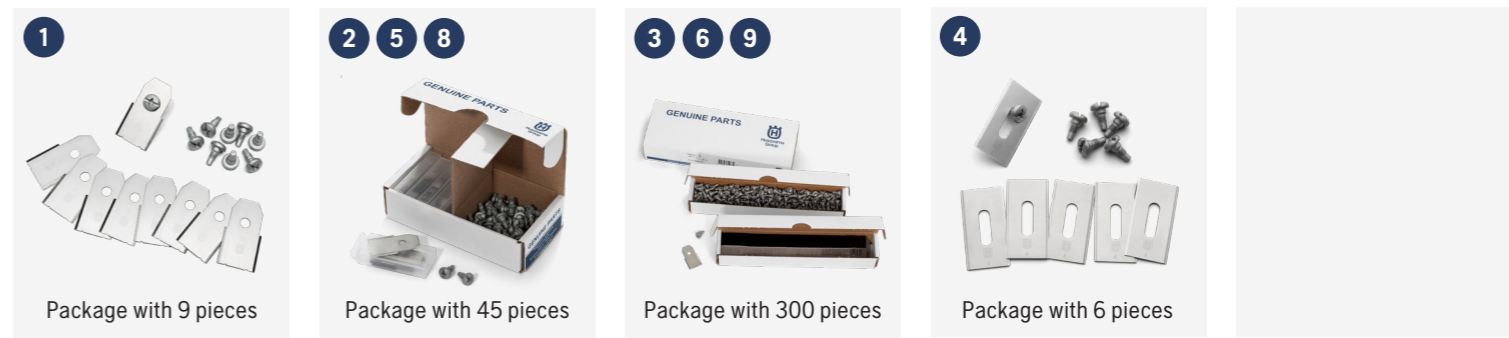
WHEEL KITS



Art. No	105	305 NEW	310	315	315X	405X NEW	415X NEW	320 /420	440	430X	450X	520	550	550 EPOS	435X AWD	535 AWD
TERRAIN KIT																
1 597 70 54-01		●				●	●									
2 587 23 53-01			●	●	●											
3 581 88 97-02								●	●	●	●	●	●	●		
WHEEL BRUSH KIT																
4 587 23 57-01			●	●	●											
5 581 90 31-02								●	●	●	●	●	●	●		
WHEEL BRUSH REFILL																
6 505 13 28-03		●	●	●	●	●	●								●	●
7 581 98 20-02								●	●	●	●	●	●	●		

BLADES

- Fits good
- Fits but not optimized



Art. No	105	305 NEW	310	315	315X	405X NEW	415X NEW	320 /420	440	430X	450X	520	550	550 EPOS	435X AWD	535 AWD
HUSQVARNA AUTOMOWER BLADES																
1 577 86 46-03		●	●	●	●	●	●	●	●	●	●	●	●	●	●	●
2 577 60 65-05		●	●	●	●	●	●	●	●	●	●	●	●	●	●	●
3 577 60 66-04		●	●	●	●	●	●	●	●	●	●	●	●	●	●	●
AUTOMOWER ENDURANCE BLADES																
4 595 08 44-01		●	●	●	●	●	●	●	●	●	●	●	●	●	●	●
5 595 08 44-02		●	●	●	●	●	●	●	●	●	●	●	●	●	●	●
6 595 08 44-03		●	●	●	●	●	●	●	●	●	●	●	●	●	●	●



TOP COVERS

- Fits good
- Fits but not optimized

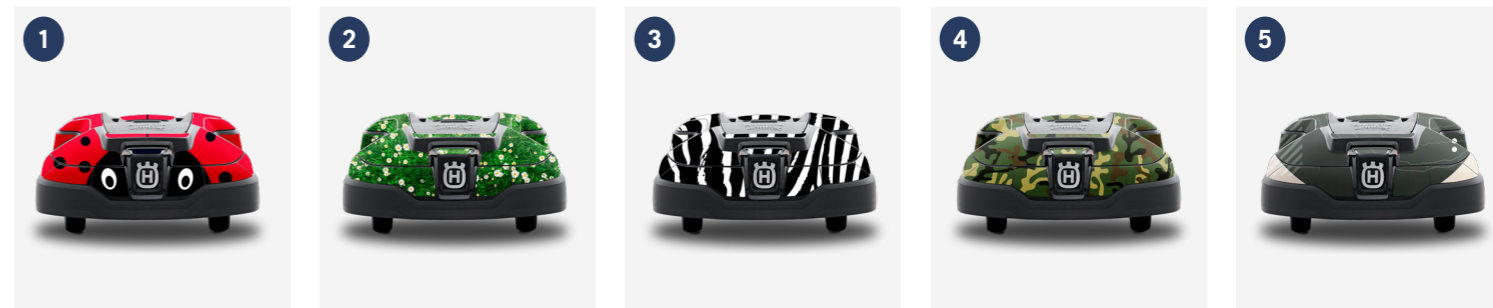


Art. №	105	305 NEW	310	315	315X	405X NEW	415X NEW	320 /420	440	430X	450X	520	550	550 EPOS	435X AWD	535 AWD
AUTOMOWER ORIGINAL BODY																
1 580 96 54-02	●															
2 597 70 31-01		●														
3 597 70 31-02		●														
4 587 23 58-02			●	●												
5 587 23 58-03			●	●												
6 590 87 69-02					●											
7 590 87 69-03					●											
8 529 46 13-01						●	●									
9 529 46 13-02						●	●									
10 580 96 56-02								●								
11 590 87 70-02									●							
12 590 87 70-03									●							
13 588 79 91-02										●						
14 588 79 91-03										●						
15 591 49 60-01											●					
16 591 49 60-02											●					
17 591 49 61-01												●	●			
18 591 49 61-02												●	●			
19 596 30 00-01															●	
20 596 30 00-02															●	
21 596 30 00-03															●	
22 596 30 02-01																●
23 596 30 02-02																●



AUTOMOWER SKINS

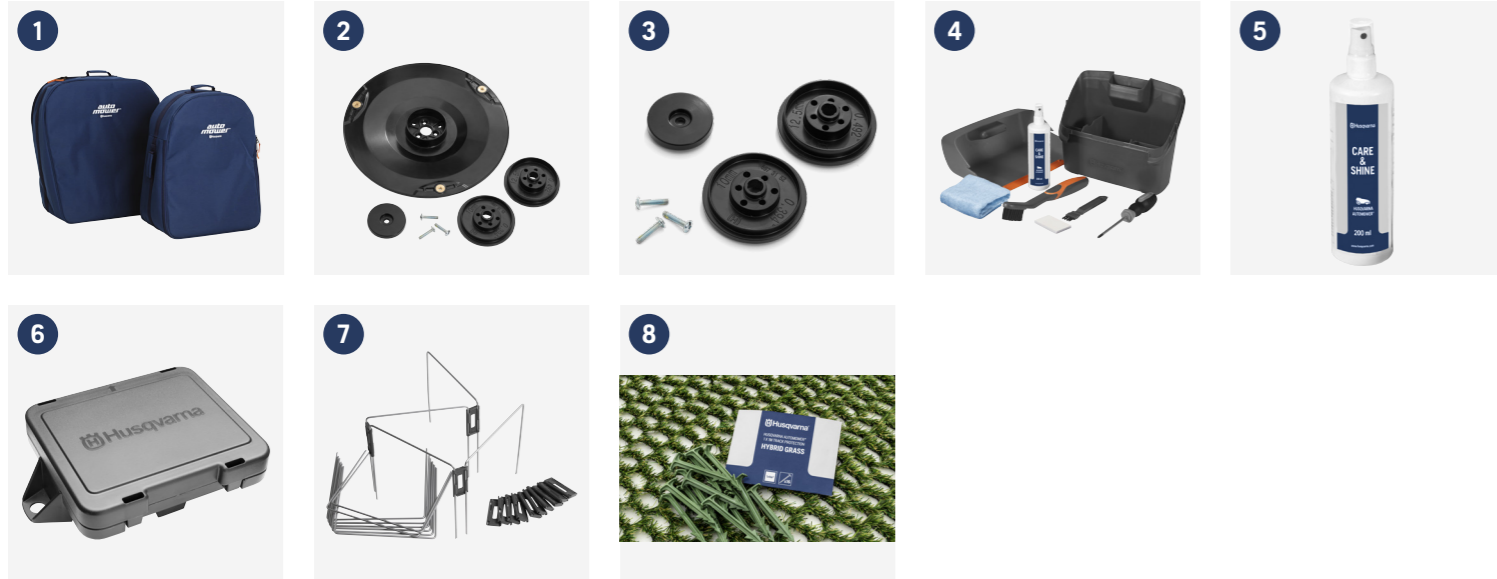
- Fits good
- Fits but not optimized



Art. №	105	305 NEW	310	315	315X	405X NEW	415X NEW	320 /420	440	430X	450X	520	550	550 EPOS	435X AWD	535 AWD
1 LADY BUG SKIN SET																
599 29 24-01	●															
599 29 24-02		●														
599 29 24-03			●	●												
599 29 24-04					●											
599 29 24-07						●	●									
599 29 24-05								●	●							
599 29 24-06													●			
2 FLOWERBED SKIN SET																
599 29 47-01		●														
599 29 47-02			●	●												
599 29 47-03					●											
599 29 47-06						●	●									
599 29 47-04								●	●							
599 29 47-05													●			
3 ZEBRA SKIN SET																
599 29 49-01		●														
599 29 49-02			●	●												
599 29 49-03					●											
599 29 49-06						●	●									
599 29 49-04								●	●							
599 29 49-05													●			
4 CAMO SKIN SET																
599 29 50-01		●														
599 29 50-02			●	●												
599 29 50-03					●											
599 29 50-06						●	●									
599 29 50-04								●	●							
599 29 50-05													●			
5 GEOMAP SKIN SET																
599 29 52-02			●	●												
599 29 52-01		●														

Skins in more designs and models available online myhusqvarna.com

OTHERS



- Fits good
- Fits but not optimized

Art. No	105	305 NEW	310	315	315X	405X NEW	415X NEW	320 /420	440	430X	450X	520	550	550 EPOS	435X AWD	535 AWD
SOFT CARRYING BAG																
1 522 91 67-01	○	●	●	●	●	●	●	●	●	●	●	●	●			
AUTOMOWER® FAIRWAY KIT																
2 597 49 63-01								●	●	●	●	●	●	●		
3 597 49 63-02								●	●	●	●	●	●	●		
CLEANING AND MAINTENANCE KIT																
4 590 85 51-01	●	●	●	●	●	●	●	●	●	●	●	●	●	●	●	●
CARE AND SHINE SPRAY																
5 593 96 79-01	●	●	●	●	●	●	●	●	●	●	●	●	●	●	●	●
CONNECTOR PROTECTION BOX																
6 590 85 50-01	●	●	●	●	●	●	●	●	●	●	●	●	●	●	●	●
TEMPORARY FENCING ARCHES																
7 597 98 70-01	●	●	●	●	●	●	●	●	●	●	●	●	●	●	●	●
TRACK PROTECTION																
8 598 89 60-01	●	●	●	●	●	●	●	●	●	●	●	●	●	●	●	●



INSTALLATION ACCESSORIES

BOUNDARY WIRE AND INSTALLATION KIT



- Fits good
- Fits but not optimized

Art. No	105	305 NEW	310	315	315X	405X NEW	415X NEW	320 /420	440	430X	450X	520	550	550 EPOS	435X AWD	535 AWD
REPAIR KIT																
1 597 53 95-01	●	●	●	●	●	●	●	●	●	●	●	●	●	●	●	●
BOUNDARY WIRE STANDARD Ø2,7MM																
2 597 23 78-02	50m	●	●	●	●	●	●	●	●	●	●	●	●	●	●	●
3 597 23 78-01	150m	●	●	●	●	●	●	●	●	●	●	●	●	●	●	●
4 580 66 20-09	800m	●	●	●	●	●	●	●	●	●	●	●	●	●	●	●
BOUNDARY WIRE HEAVY DUTY Ø3,4MM																
5 522 91 41-02	500m	●	●	●	●	●	●	●	●	●	●	●	●	●	●	●
BOUNDARY WIRE PRO Ø5,5MM																
6 593 29 77-02	300m	●	●	●	●	●	●	●	●	●	●	●	●	●	●	●
INSTALLATION KIT																
7 967 97 21-01	●	●	●	●	●	●	●	●	●	●	●	●	●	●	●	●
8 967 97 22-01	●	●	●	●	●	●	●	●	●	●	●	●	●	●	●	●
9 967 97 23-01	●	●	●	●	●	●	●	●	●	●	●	●	●	●	●	●



OTHERS

- Fits good
- Fits but not optimized

1 5 pieces

2 100 pieces



3 5 pieces

4 100 pieces



5 100 pieces



6



Art. №	105	305 NEW	310	315	315X	405X NEW	415X NEW	320 /420	440	430X	450X	520	550	550 EPOS	435X AWD	535 AWD
COUPLER																
1 577 86 47-01	●	●	●	●	●	●	●	●	●	●	●	●	●		●	●
2 501 98 02-03	●	●	●	●	●	●	●	●	●	●	●	●	●		●	●
CONNECTOR																
3 577 86 48-01	●	●	●	●	●	●	●	●	●	●	●	●	●		●	●
4 535 12 90-02	●	●	●	●	●	●	●	●	●	●	●	●	●		●	●
STAPLES																
5 577 86 42-01	●	●	●	●	●	●	●	●	●	●	●	●	●		●	●
REFERENCE STATIONS																
6 970 46 82-03														●		



GENUINE PARTS

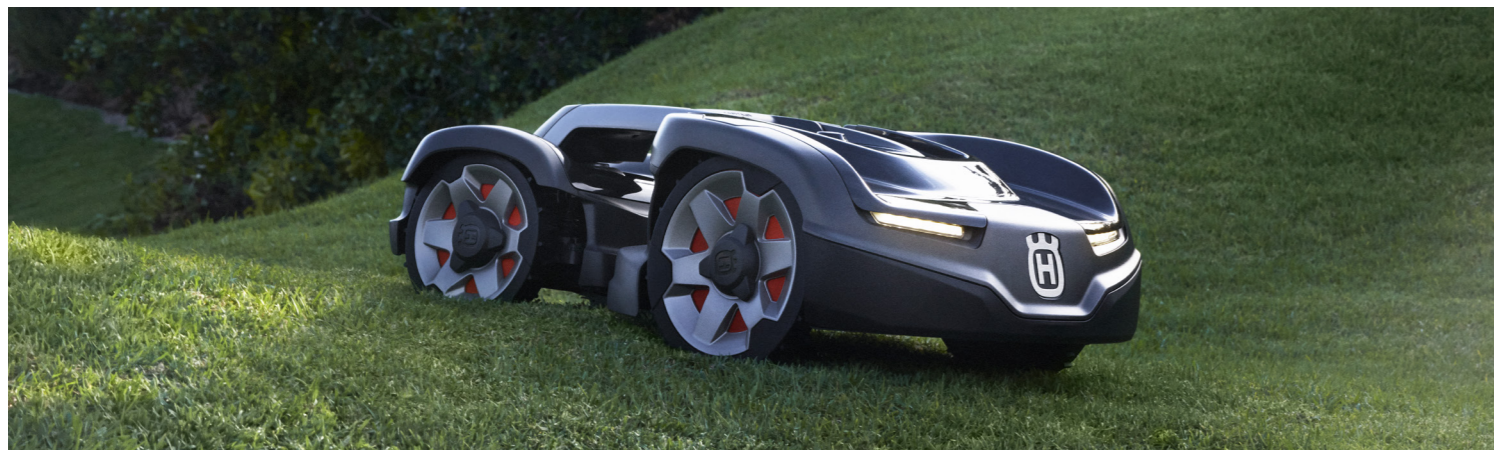


WHEELS

● Fits to
○ Check serial number in EPC



Art. №	105	220AC	230 ACX	SOLAR HYBRID	305 NEW	310	315	315X	405X NEW	415X NEW	420	430X	440	450X	520	550	435X AWD	535 AWD
BALL BEARING																		
1											●	●	●	●	●	●		
2											●	●	●	●	●	●		
3		●	●	●														
4		●	●	●														
O-RING																		
5					●	●	●	●	●	●	●	●	●	●	●	●	●	●
WASHER																		
6		●	●	●		●	●	●										
WHEEL KIT																		
7											●	●	●	●	●	●		
8						●	●	●										
9		●	●	●														
10					●				●	●								
WHEEL																		
11						●	●	●			●	●	●	●	●	●		
12	●																	
13											●		●		●	●		●
14												●		●			●	
15					●	●	●											●
16								●	●	●							●	
17		●							●	●								●
18			●	●						●	●							●
19	●																	
20	●																	
WHEEL MOTOR KIT																		
21	●																	
22						●	●	●										
23		●		●														
24			●															
25					●	●	●	●	●	●								
26											●	●	●	●	●	●	●	●



POWER SUPPLY UNIT AND LOW VOLTAGE CABLE

● Fits to
○ Check serial number in EPC



● Fits to
○ Check serial number in EPC

Art. №	105	220AC	230 ACX	SOLAR HYBRID	305 NEW	310	315	315X	405X NEW	415X NEW	420	430X	440	450X	520	550	435X AWD	535 AWD
POWER SUPPLY UNIT - CH																		
1	535 12 37-03	●		●														
2	501 00 44-03		●															
3	590 44 22-03 1.3A	●			●	●	●	●	●	●								
4	590 44 23-03 2.2A										●				●			
5	590 44 24-03 4.2A											●						
6	590 44 25-03 7.0A												●	●		●	●	●
POWER SUPPLY UNIT - EU																		
7	535 12 37-01	●		●														
8	501 00 44-01		●															
9	593 16 36-01 1.3A	●			●	●	●	●	●	●								
10	584 86 26-01 1.3A	●			●	●	●	●	●	●								
11	590 44 23-01 2.2A										●				●			
12	590 44 24-01 4.2A											●						
13	590 44 25-01 7.0A												●	●		●	●	●
POWER SUPPLY UNIT - UK																		
14	590 44 22-02 1.3A	●			●	●	●	●	●	●								
15	590 44 23-02 2.2A										●				●			
16	590 44 24-02 4.2A											●						
17	590 44 25-02 7.0A												●	●		●	●	●
CABLE length																		
18	588 76 50-04 20m												●	●		●	●	●
19	588 76 50-05 10m												●	●		●	●	●
20	588 76 50-06 3m												●	●		●	●	●
21	579 82 51-01 20m	●			●	●	●	●	●	●	●	●	●	●	●			
22	579 82 51-02 10m	●			●	●	●	●	●	●	●	●	●	●	●			
23	579 82 51-03 3m	●			●	●	●	●	●	●	●	●	●	●	●			
24	579 82 51-04 5m	●			●	●	●	●	●	●	●	●	●	●	●			
25	535 12 73-05 20m		●		●													
26	535 12 73-06 20m			●														



TOP 5 AUTOMOWER SCREWS



Art. №	Make sure you have these screws in stock
1	535 07 60-01 SCREW
2	590 74 02-01 SCREW ISO 14583 M5X12 T25 A2-7
3	575 54 33-14 SCREW 14MM
4	574 45 01-01 SCREW ITXPANT
5	535 13 05-02 SCREW TORX M4X8 8.8 ZPB PATCH

Tested and approved by Husqvarna in tough conditions



Copyright © 2021 Husqvarna AB (publ). All rights reserved.
Husqvarna, Automower® and other product and feature marks are trademarks
of Husqvarna Group as displayed at www.international.husqvarna.com

Husqvarna AB, Drottninggatan 2, SE-561 82 Huskvarna, Sweden
+46 (0)36-14 65 00

www.husqvarna.com



Husqvarna
READY WHEN YOU ARE